

MULTI-Matic

Compact Trolley Range

***2 x NEW**
Dosed Mopping Trolleys



**Cost-Effective, Versatile and
Sustainably Engineered Trolley Range**

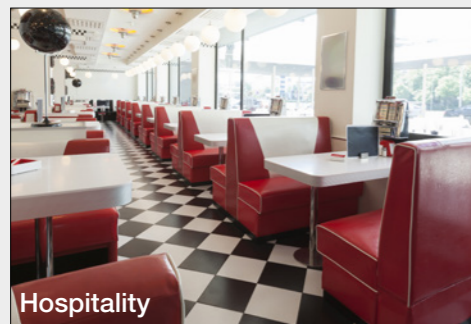


Numatic

MULTI-Matic

Compact and Versatile

- ✓ 9 Model Trolley Range
- ✓ Made from ReFlo Technology
- ✓ On-board Mopping & Storage Options
- ✓ Easy to Use
- ✓ Practical & Efficient



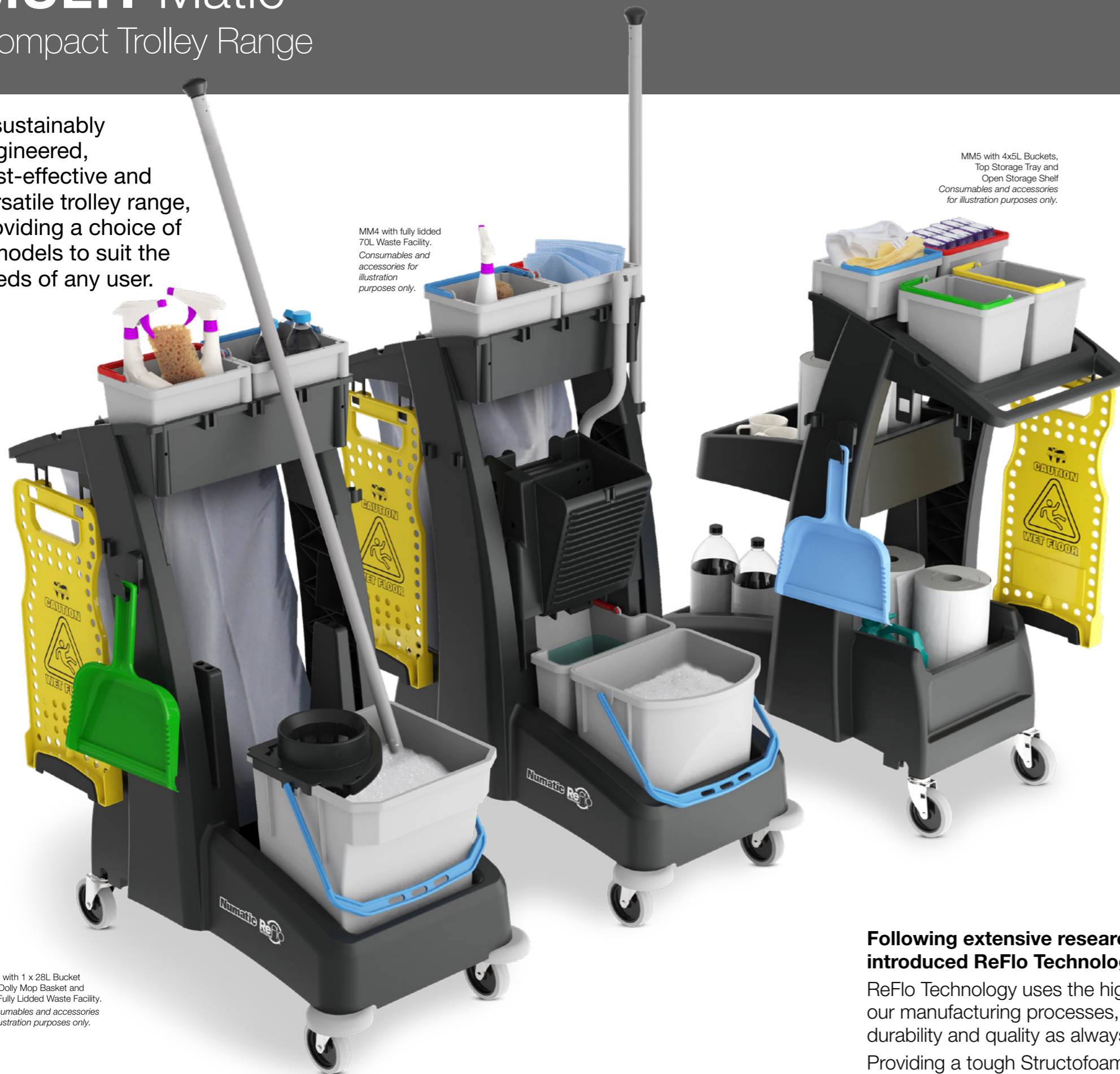
A **compact** and **versatile** trolley range, ensuring **productivity** with a choice of **janitorial solutions** and **mopping options** to suit all environments.



MULTI-Matic

Compact Trolley Range

A sustainably engineered, cost-effective and versatile trolley range, providing a choice of 9 models to suit the needs of any user.



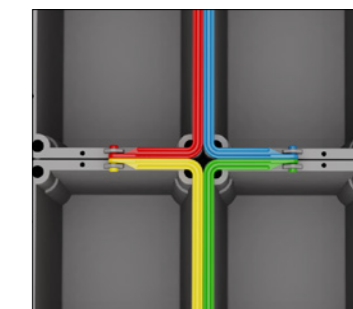
MM4 with fully lidded 70L Waste Facility. Consumables and accessories for illustration purposes only.

MM5 with 4x5L Buckets, Top Storage Tray and Open Storage Shelf. Consumables and accessories for illustration purposes only.

MM2 with 1 x 28L Bucket with Dolly Mop Basket and 70L Fully Lidded Waste Facility. Consumables and accessories for illustration purposes only.



On-board Waste Facility
Convenient, fully lidded 70L waste facility; right there when you need it.



Industry Colour-coding
Industry colour-coding for effective infection control.



Mopping
On-board compact and accessible mopping system, providing on-the-go cleaning.



Buffer Kit
Non-marking, rotating buffers for extra wall and door protection.



Optional Floor Sign
Compact and easy to store design.



Following extensive research and testing, we have introduced **ReFlo Technology** to our VersaCare range.

ReFlo Technology uses the highest quality recycled plastic within our manufacturing processes, delivering the same Numatic reliability, durability and quality as always.

Providing a tough Structofoam construction, ReFlo Technology ensures our products are both sustainably engineered and built to last.



Shelf Storage
Open shelf storage for easy access to all your cleaning equipment and supplies on the move.

Designed for enhanced usability, productivity and simplicity, MULTI-Matic offers a choice of 9 models to suit any cleaning task or environment.



MM0 PN: 914905
The perfect compact standard trolley base, providing high and low storage options; ready to be customised to suit your cleaning requirements.

- 480x940x1050mm (WxLxH)



MM1 PN: 914913
A compact trolley available with 28L dolly mop bucket, top storage and 2 x 5L buckets.

- 2 x 5L Buckets
- 1 x 28L Bucket, C/W Blue Handle
- 1 x Dolly Mop Basket
- 1 x Large T-Slot Hook
- 1 x T-Slot Mopstick Clip
- 480x940x1130mm (WxLxH)



Top Storage Tray used on MM1 / 3 / 5 / 7



On-board Waste Facility used on MM2 / 4 / 6 / 8



MM2 PN: 915050
A compact trolley available with 70L fully lidded waste facility, 28L dolly mop bucket and 2 x 5L buckets.

- 1 x 70L Waste Bin Liner
- 2 x 5L Buckets
- 1 x 28L Bucket, C/W Blue Handle
- 1 x Dolly Mop Basket
- 1 x Large T-Slot Hook
- 1 x T-Slot Mopstick Clip
- 480x940x1130mm (WxLxH)



MM3 PN: 915052
Compact twin mopping trolley with fully accessible rear bucket feature, complete with vertical press, 2 x 5L buckets and top storage; ready for on the go cleaning.

- 1 x 17L Front Bucket, C/W Blue Handle
- 1 x 15L Rear Bucket, C/W Red Handle
- 1 x Vertical Press
- 1 x Top Storage Tray
- 2 x 5L Buckets
- 1 x Large T-Slot Hook
- 1 x T-Slot Mopstick Clip
- 480x940x1130mm (WxLxH)



MM4 PN: 915059
Compact twin mopping trolley with fully accessible rear bucket feature, complete with vertical press, 2 x 5L buckets and 70L fully lidded waste facility; ready for on the go cleaning.

- 1 x 17L Front Bucket, C/W Blue Handle
- 1 x 15L Rear Bucket, C/W Red Handle
- 1 x Vertical Press
- 1 x 70L Waste Bin Liner
- 2 x 5L Buckets
- 1 x Large T-Slot Hook
- 1 x T-Slot Mopstick Clip
- 480x940x1130mm (WxLxH)



MM5 PN: 915061
Compact trolley with convenient storage solutions. Multi-level storage for equipment and supplies with top storage and 2 x 5L buckets.

- 2 x 5L Buckets
- 1 x Large T-Slot Hook
- 1 x T-Slot Mopstick Clip
- 480x940x1130mm (WxLxH)



MM6 PN: 915065
Compact trolley with convenient storage solutions. Multi-level storage for equipment and supplies with 2 x 5L buckets and 70L fully lidded waste facility.

- 1 x 70L Waste Bin Liner
- 2 x 5L Buckets
- 1 x Large T-Slot Hook
- 1 x T-Slot Mopstick Clip
- 480x940x1130mm (WxLxH)



NEW

MM7 PN: 915635
A compact trolley with an on-board dosed flat mopping system, 2 x 5L buckets and top storage.

- Dosed Mop Bucket, C/W Blue Handle
- 1 x 28L Bucket, C/W Red Handle
- 2 x 5L Buckets
- 1 x Large T-Slot Hook
- 1 x T-Slot Mopstick Clip
- 480x940x1130mm (WxLxH)



NEW

MM8 PN: 915638
A compact trolley with an on-board dosed flat mopping system, 2 x 5L buckets and 70L lidded waste facility.

- Dosed Mop Bucket, C/W Blue Handle
- 1 x 28L Bucket, C/W Red Handle
- 2 x 5L Buckets
- 1 x 70L Waste Bin Liner
- 1 x Large T-Slot Hook
- 1 x T-Slot Mopstick Clip
- 480x940x1130mm (WxLxH)



5L Bucket
 • 5L Bucket, Red Handle
 PN: 905225
 • 5L Bucket, Blue Handle
 PN: 905226
 • 5L Bucket, Green Handle
 PN: 905227
 • 5L Bucket, Yellow Handle
 PN: 905228



5L Swing Bucket Lid
 • Lid for 5L Swing Bucket, Clear
 PN: 902108



5L Bucket Kit
 • 5L Bucket Holder C/W Fixing, Black
 A - PN: 629050
 • 5L Bucket Kit, Red Handle
 B - PN: 906277
 • 5L Bucket Kit, Blue Handle
 B - PN: 906278
 • 5L Bucket Kit, Green Handle
 B - PN: 906279
 • 5L Bucket Kit, Yellow Handle
 B - PN: 906280



15L TwinMop Bucket
 • 15L TwinMop Bucket, Red Handle
 PN: 905221
 • 15L TwinMop Bucket, Blue Handle
 PN: 905222
 • 15L TwinMop Bucket, Green Handle
 PN: 905223
 • 15L TwinMop Bucket, Yellow Handle
 PN: 905224



17L Front Mop Bucket
 • 1 x 17L Bucket, Blue Handle
 • Used on: MM3 / 4
 PN: 915058



Wet Floor Sign
 • Wet Floor Sign with Tray-Fix Hooks, Yellow
 A - PN: 629044
 • Wet Floor Sign Assembly, Yellow, English
 B - PN: 901457



PCM403 PolyStatic 3-Piece Mop Set
 • 50 x PolyStatic Mop Cloths
 • Disposable PolyStatic Mop "Gripper" Pad
 • Velcro Fixing
 • Pad size 400mm
 PN: 629813



DTK1 Kentucky Mop Set
 • 1 x Kentucky 400g Mop
 • Suitable for Vertical Press
 PN: 629332



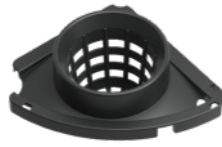
DTK2 Pocket Mop Set
 • 1 x BluTec Microfibre Pocket Mop
 • Suitable for Vertical Press, Wide Press and MopMatic
 • Pocket Fixing
 • Pad size 400mm
 PN: 629333



15L Rear Mop Bucket
 • 1 x 15L Bucket, Red Handle
 • Used on: MM3 / 4
 PN: 915057



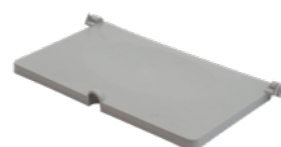
28L Bucket with Handle
 • 28L TwinMop Bucket, Red Handle
 PN: 905217
 • 28L TwinMop Bucket, Blue Handle
 PN: 905218
 • 28L TwinMop Bucket, Green Handle
 PN: 905219
 • 28L TwinMop Bucket, Yellow Handle
 PN: 905220
 • Used on MM1/ 2/ 7/ 8



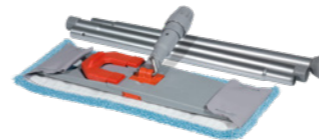
Mop Basket
 • Dolly Mop Basket
 PN: 906729



Waste Bag Securing Moulding
 • Used on: MM2 / 4 / 6 / 8
 PN: 913978



Waste Bin Lid
 • Used on: MM2 / 4 / 6 / 8
 PN: 913979



DTK3 Hang-on Mop Set
 • 1 x BluTec Microfibre Mop
 • Suitable for Vertical Press
 • Hang-on Fixing
 • Pad size 400mm
 PN: 629334



DTK9 Twist Mop
 • 1 x Bactiguard Mop
 PN: 906460



DTK12G Wing Mop Pump Action Set
 • 1 x BluTec Microfibre Pocket Mop
 • Suitable for Vertical Press, Wide Press and MopMatic
 • Pocket Fixing
 • Pad size 400mm
 PN: 906205



DTK13G Wing Mop Pump Action Set
 • 1 x BluTec Microfibre Hang-on Mop
 • Suitable for Vertical Press
 • Hang-on Fixing
 • Pad size 400mm
 PN: 909278



Top Storage Tray
 • Used on: MM1 / 3 / 5 / 7
 PN: 913981



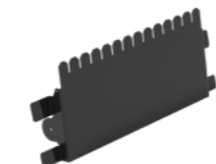
Mid Storage Tray
 • Used on: MM5 / 6
 PN: 915060



MB400 Mop Dosing Lid Assembly
 • Dosed Mop Bucket Lid
 • Used on MM7 / 8
 PN: 915406



MB400 Mop Dosing Bucket
 • Dosed Mop Bucket, Blue Handle
 • Used on: MM7 / 8
 PN: 915407



Mopmatic Bucket Bracket Frame
 • Dosed Mop Bucket Bracket Frame
 • Used on: MM7 / 8
 PN: 915613



Grey Caddy
 PN: 628437



Vertical Mop Press
 • Boxed Pressed Assembly
 • Used on: MM3 / 4
 PN: 915326
 • Twist Mop Assembly
 • Used on: MM3 / 4
 PN: 915237



TwinMop Wheel Kit
 • Large Wheel Kit
 PN: 915320



Fabric Waste Bag
 • Multi-pocket for convenient storage
 PN: 915319

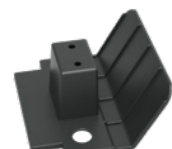


75mm Castor x1
 PN: 204118

Waste Bags
 • 70L Waste Bags (570mm x 1000mm)
 Grey, Roll x 10
 PN: 908230



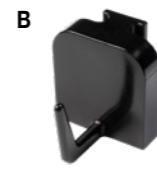
Twin 1L Bottle Holder
 • Twin 1L Bottle Holder, ReFlo Black
 PN: 910375



Mop Support Kit
 • 1 x Mop Support for on-board Mop Storage
 PN: 915321



Large T-Slot Hook, Small T-Slot Hook
 • Large T-Slot Hook (x1) A - PN: 911936
 • Large T-Slot Hook (x10) A - PN: 912547
 • Small T-Slot Hook (x1) B - PN: 915171
 • Small T-Slot Hook (x10) B - PN: 915325



Mop Clamp & Clip
 • T-Slot Clamp (x1) C - PN: 912528
 • T-Slot Clamp (x10) C - PN: 912529
 • Mopstick Clip (x1), ReFlo Black
 D - PN: 629874
 • Mopstick Clip (x10), ReFlo Black
 D - PN: 629883

Subject to change without prior notice.

Nu-Design



Nu-Design guides you through the product configuration process, providing a visual output and configuration breakdown at each selection. The result; a reliable, functional and innovative cleaning system that fits your needs precisely.

Individual Environments Demand Individual Cleaning Solutions
 Finding a janitorial system that fits your needs completely can be a real challenge. Giving total freedom of choice to the user, Nu-Design offers the ultimate solution.

How it works

1. Select your trolley base and castor options
2. Pick storage options that meet your needs exactly
3. Choose your mopping system, waste options, accessories and personalisation
4. Submit for an itemised breakdown and quote

Compatible with desktop and mobile devices



Visit: numatic.com/apps/nu-design

Head Office
Numatic International Limited
Chard, Somerset TA20 2GB UNITED KINGDOM

Tel: 01460 68600 numatic.com

Numatic International GmbH
Fränkische Straße 15-19
30455 Hannover
DEUTSCHLAND

Tel: 05 11 98 42 16 0
numatic.de

Numatic International S.A.S
13/17 rue du Valengellier
EAE la Tuilerie, 77500 Chelles
FRANCE

Tel: 01 64 72 61 61
numatic.fr

Numatic International Schweiz AG.
Sihlbruggstrasse 3A
6340 Baar
SCHWEIZ

Tel: 041 768 07 60
numatic.ch

Numatic International Denmark
Fränkische Straße 15-19
30455 Hannover
DEUTSCHLAND

Tel: (45) 0 31 64 08 08
numatic-online.dk

Numatic International ULDA
Rua da Boa Viagem, 177
4470 - 210 Moreira Maia
PORTUGAL

Tel: 351 220 047 700
numatic.pt

Numatic International (Pty.) Ltd.
16th & Pharmaceutical Roads
Midrand, Gauteng, S.A. 1685
SOUTH AFRICA

Tel: 0861 686 284
numatic.co.za

Numatic International SLU
La Forja, 41, 08840
Viladecans, Barcelona
SPAIN

Tel: 34 936 472 222
numatic.es

Numatic International Italy SRL
Via Luigi Galvani, 2
Z.I. Talponedo
33080 Porcia (PN)
ITALY

Tel: (39) 0 434 046211
numatic.it

Numatic International BV
Vennootsweg 15
2404 CG, Alphen aan den Rijn
NEDERLAND

Tel: 0172 467 999
numatic.nl

Numatic

©Numatic International Limited 2022.
Specification subject to change without prior notice.
PN: 915211 09/22